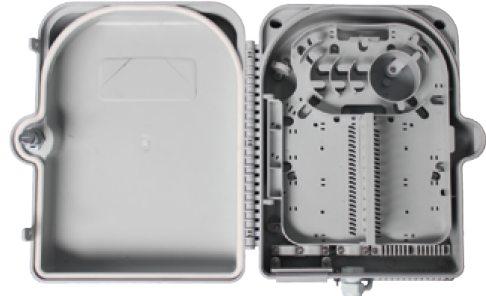


MOTB-X24A Termination Box

Description:

Widely used in FTTH access network.
Telecommunication Networks
CATV Networks
Data communications Networks
Local Area Networks

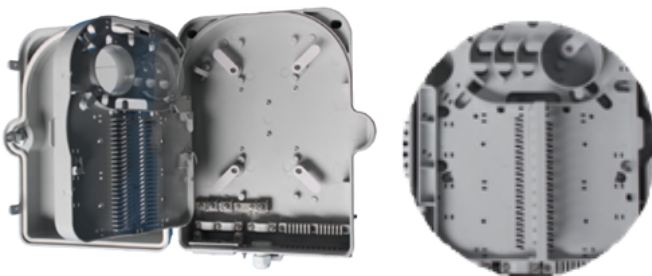


Features:

- Accommodate 1x4, 1x8, 1x16 PLC Splitter / PLC Splitter Module
- Anti-UV (Ultra Violet)
- Up to 24 FTTH Drops
- 3 inlet ports, 24 outlet ports, grounding device included
- Ability to store uncut cables
- Economic design with plastic adaptor panel
- Accommodate SC SX adaptor
- Applicable for wall/pole-mounted, indoor or outdoor
- Max. capacity(F) = 24 Splices
- ROHS compliance

Specifications:

Model	Cable Port	Capacity/PLC splitter	Dimensions (mm)	Protection Class
MOTB-X24A	3 cable ports (2 ports for cable with max dia. 15mm, 1 port for cable with max dia. 12mm) +24 drop cable ports	24 Splices, 24 SC adaptors 1x4, 1x8, 1x16 PLC splitter	335 x 275 x 95	IP 54



Ordering code:

MOTB -X24A - XX - XX X

of Adaptors
Up to 24

Adaptors Type			
SC	SC	M	Multimode
DLC	LC duplex	S	Single mode
		A	APC
		X	No adaptors